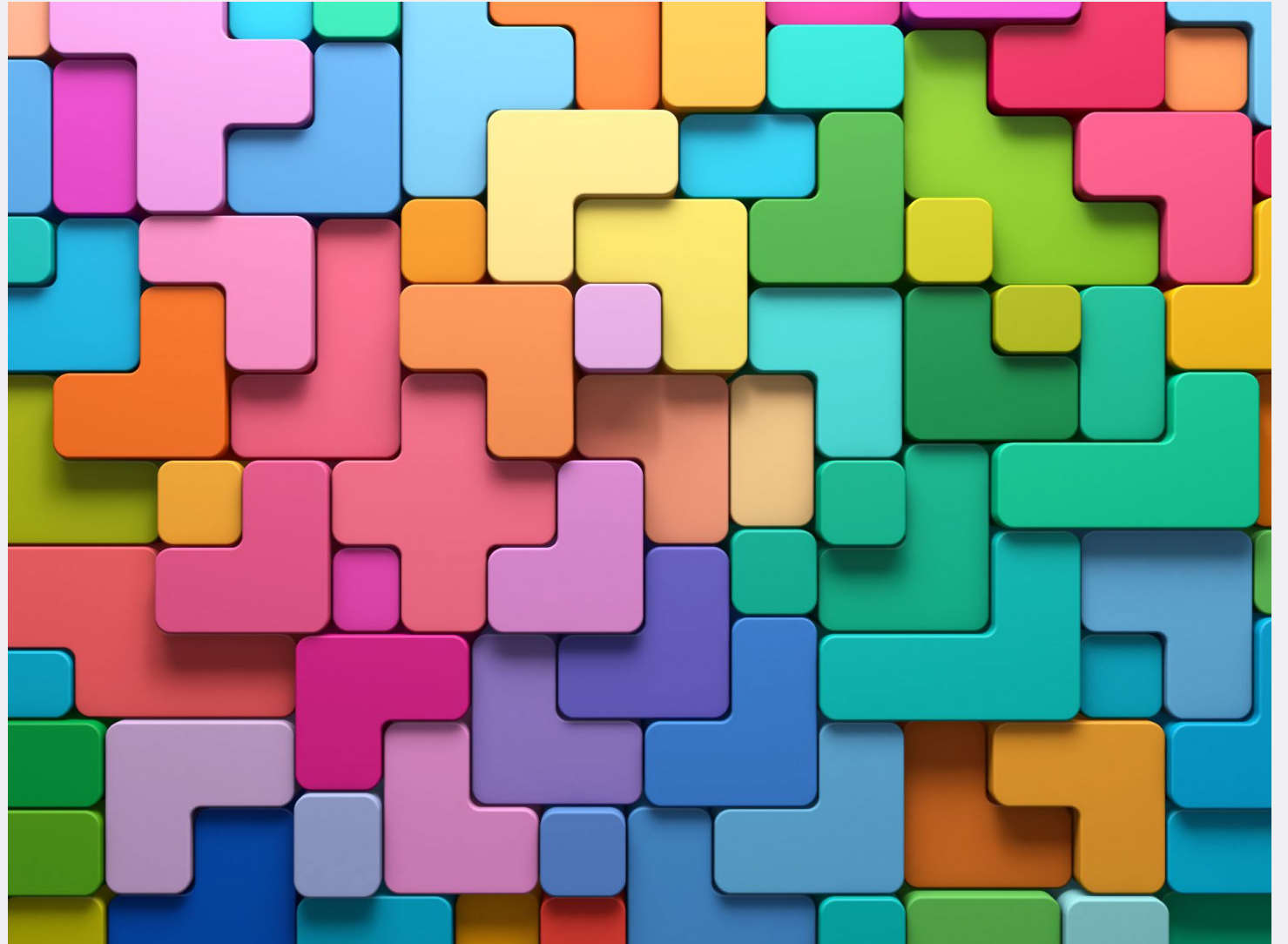


Commons stomas and pouch issues post surgery

MELISSA CUNHA, PHD, FRCS

COLORECTAL SURGEON



DISCLAIMER

I CAN BE RESPONSIBLE
FOR THEM!



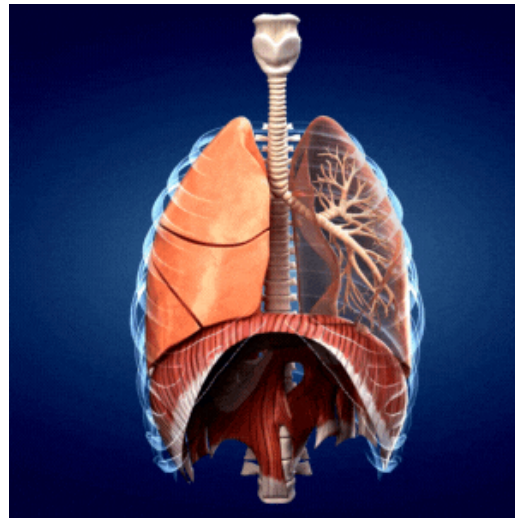
Complications of stoma surgery



Early complications

- **General**

- Infection (chest, urine, wound)
- Bleeding
- Collections
- Blood clots



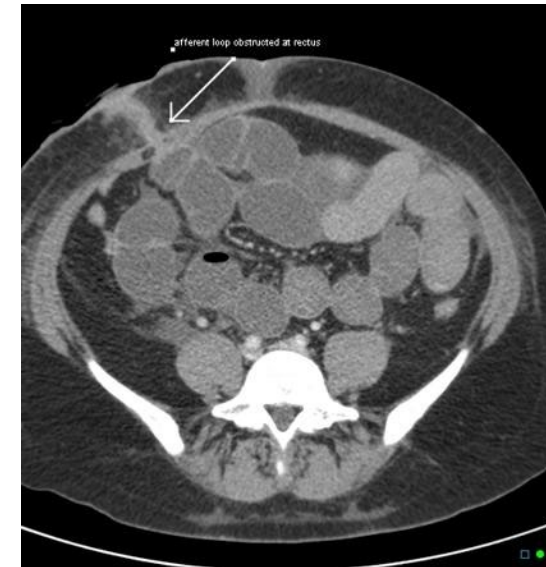
- **Stoma-related**

- Psychological
- Oedema (Swelling)
- Leaking



Early complications of stomas

- Stoma not working
 - Ileus
 - Small bowel obstruction
 - Obstruction at abdominal wall
- Working too much (High output)



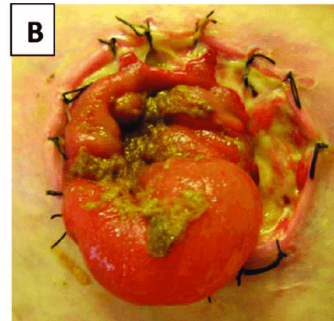
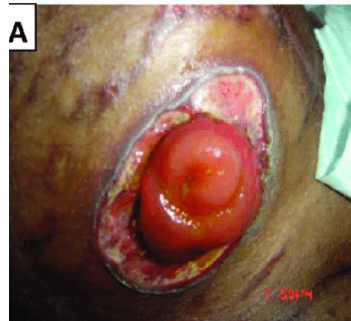
Ileus
5 to 25%



IT CAN BE COMMON !

Early Complications – Stomas

- Muco-cutaneous separation
- Necrosis
- Retraction



Intermediate or late complications

Stenosis

Prolapse

Parastomal herniation

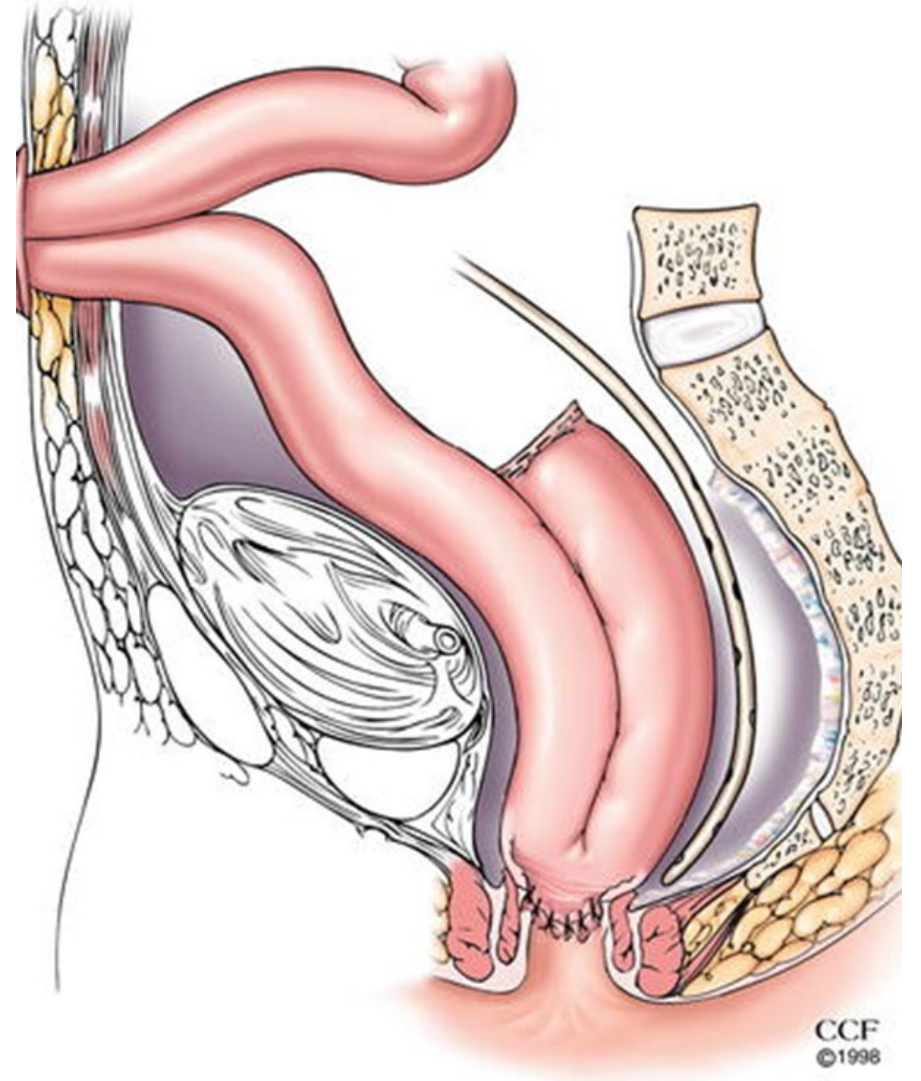
Dermatitis

Stoma not working

Stoma working too much

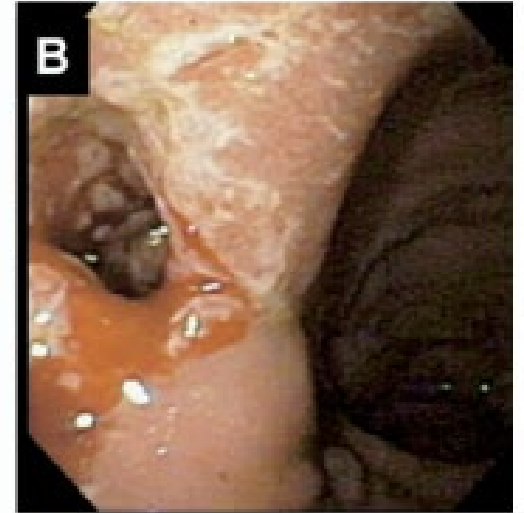
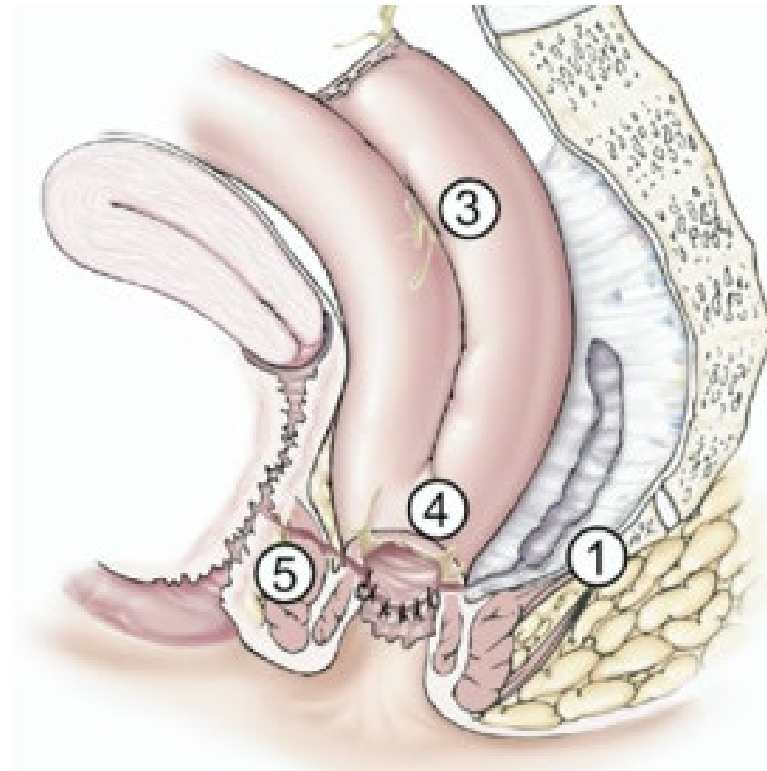


Complications of pouch surgery



Early complications

- Anastomotic leak (5%)
- Pelvic sepsis (5-15%)
- Abdominal adhesions (10%)
- Sexual dysfunction
- Urinary dysfunction



Late complications

- Adhesions (blockage)
- Pouchitis
- Stricture/stenosis (Narrowing)
- Twisted pouch
- Reduced fertility/fecundity
- Fistula (communication with vagina or skin)
- Erectile or bladder dysfunction
- Pouch failure

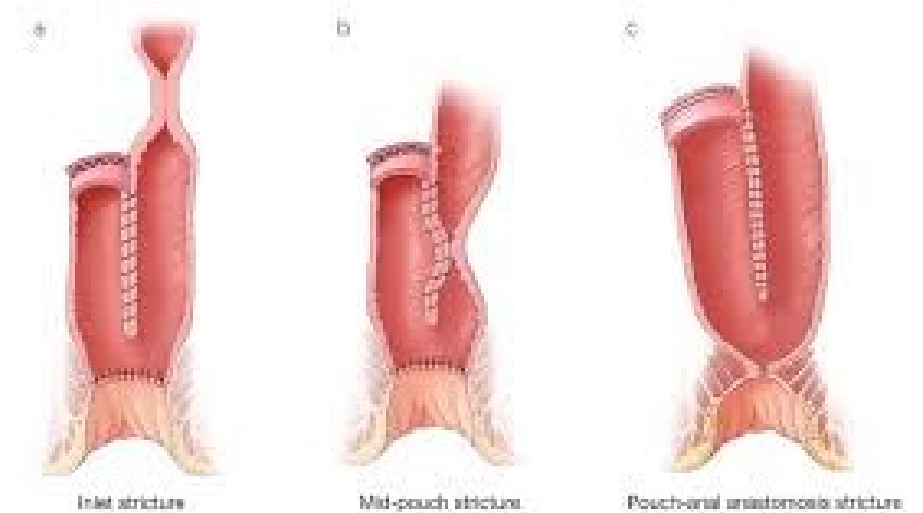
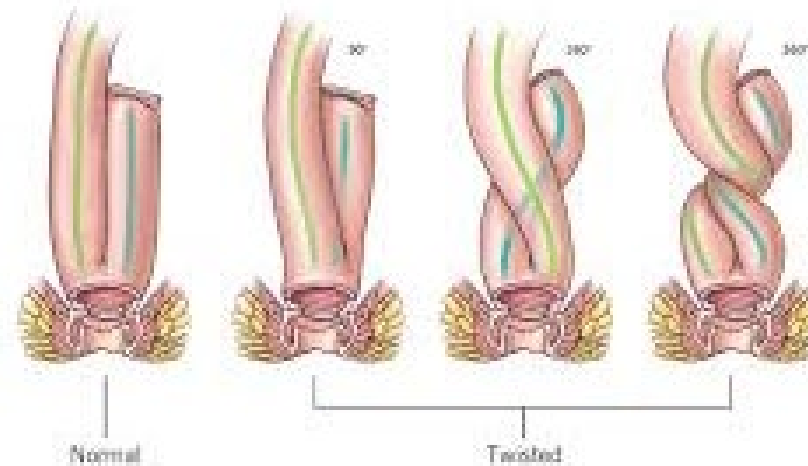
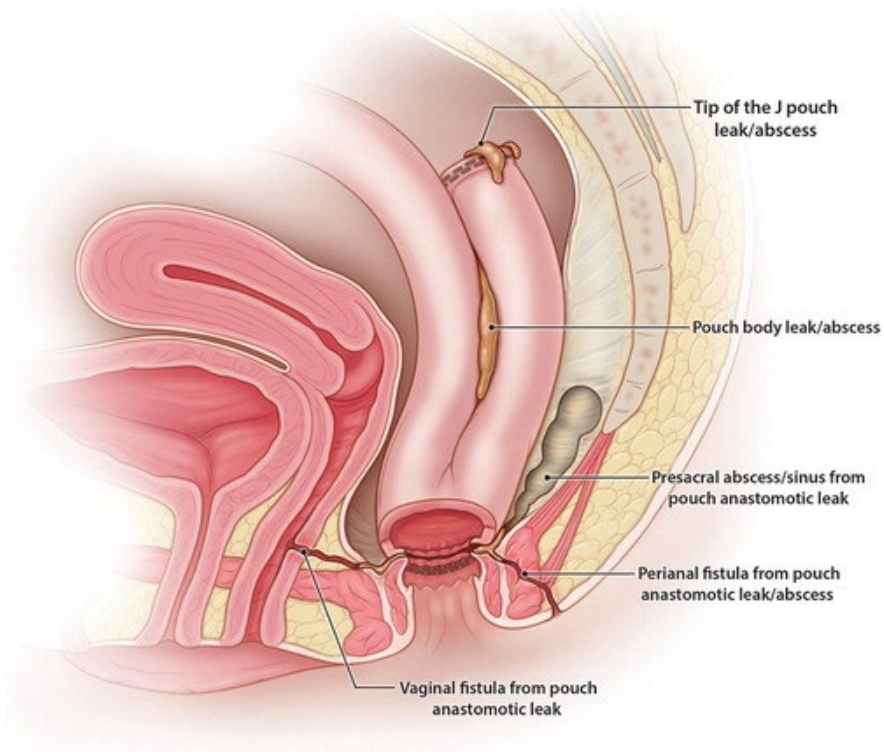


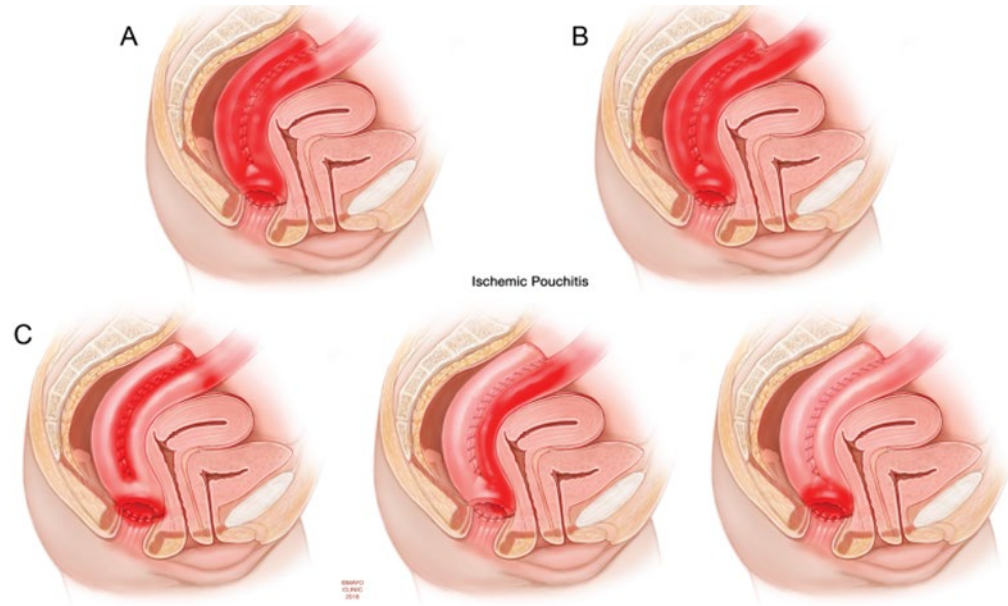
Figure 4. Common locations of pouch strictures, including (a) pouch inlet, (b) mid-pouch, and (c) pouch-oral anastomosis. Image used with permission from the Mayo Clinic.

Pouch failure



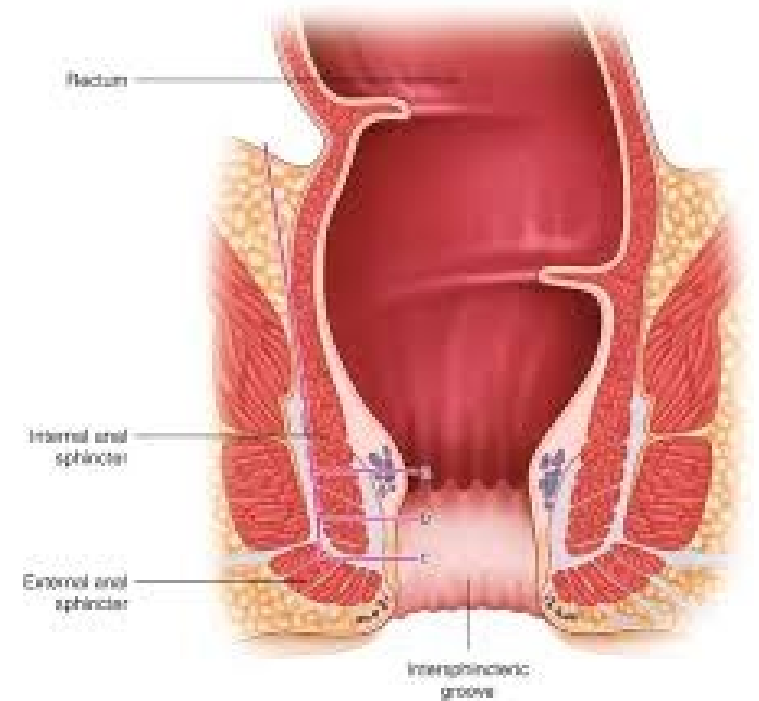
- Pouch failure:
 - 5% in 5 years
 - 10% at 10 years
 - 15% at 20 years
 - Approximately 25% of failures occur in the first year
- Causes:
 - Pelvic sepsis (50%)
 - Poor pouch function (30%)
 - Pouchitis (10%)

Pouchitis



- It is an inflammation of the pouch
- Most common late complication - 20 to 60% of patients
- 60% develop recurrent attacks
- Symptoms: frequent loose stools, urgency, cramps, lack of energy and reduced appetite
- Diagnosis: endoscopy
- Cause is unclear but related to bacteria overgrowth
- Treatment: antibiotics, probiotics and 5-ASAs, steroids or biological treatment

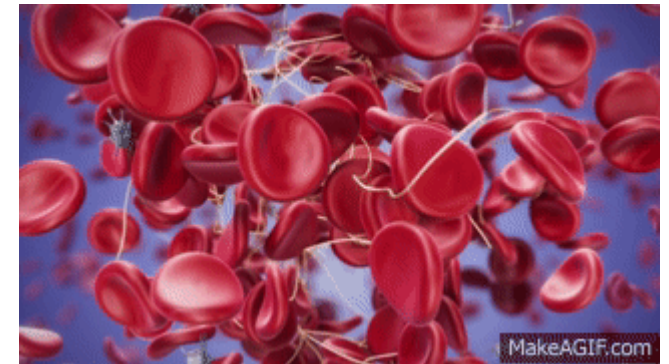
Complications of proctectomy (Removal of rectum and anus)



Complications

- Infection
 - Wound
 - Chest
 - Urine
 - Collections
- Bleeding
- Damage nearby structures
- Ileus

- Urinary dysfunction
- Sexual dysfunction
- Delayed perineal wound healing
- Perineal hernia
- Adhesions
- Blood clots



Questions?

Thank you

